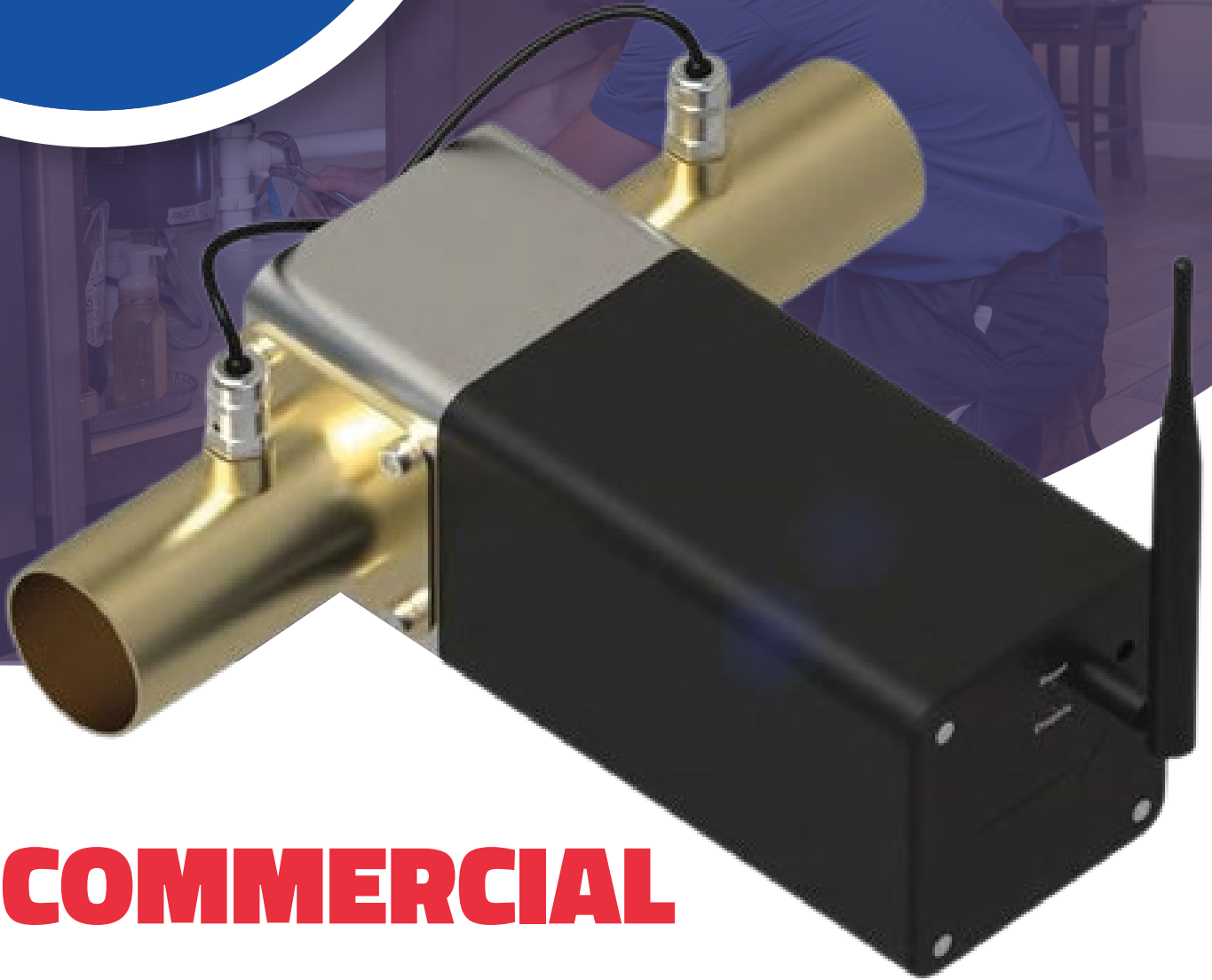




**FLOW
MANAGEMENT
SYSTEM**



**COMMERCIAL
BUILDING**

WATER OPTIMIZATION

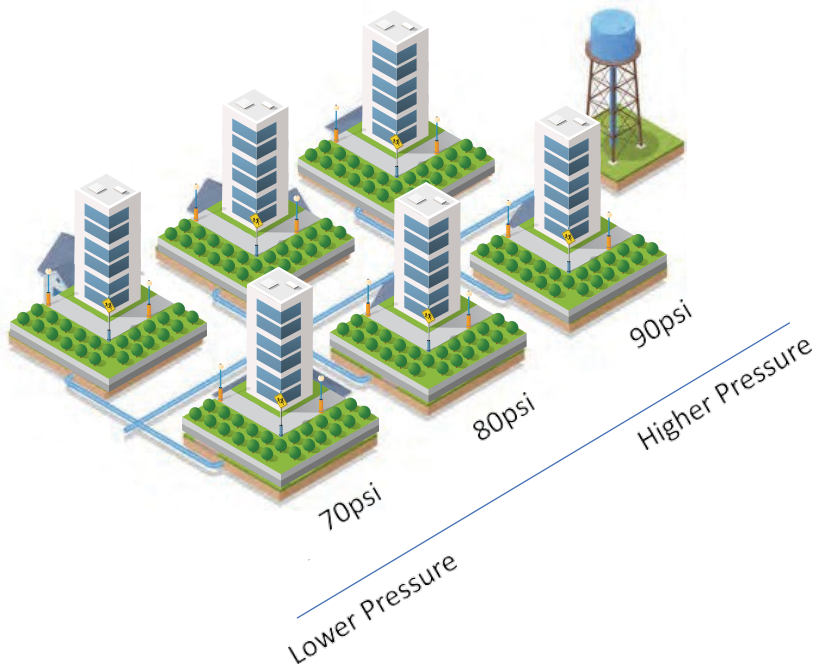
Take Control Of Your Water Consumption and
save 12% to 20% on your water bill

1623 S 51ST STREET TAMPA, FL 33619-5327 | (813) 655-7520
WWW.ALVAREZPLUMBING.COM



THE PROBLEM

If your property has more than 40 psi, you are over consuming water.



CITY INFRASTRUCTURE

Municipal water systems are designed to ensure the properties at the furthest edge of the service area have at least the minimum water pressure required by code (40 psi).

As you travel closer to the water service source (water tower, pumping station, reservoir, etc) the pressure increases.

THE RESULT



When your property's pressure is higher than required to effectively operate all your water consuming fixtures, then any time one of those fixtures is used, more water is consumed than necessary.

For example, a flushometer toilet is designed to flush with 25 psi. For every psi above this, more water will be used per flush. This applies to all faucets, irrigation, and water consuming fixtures that don't require a fixed volume.

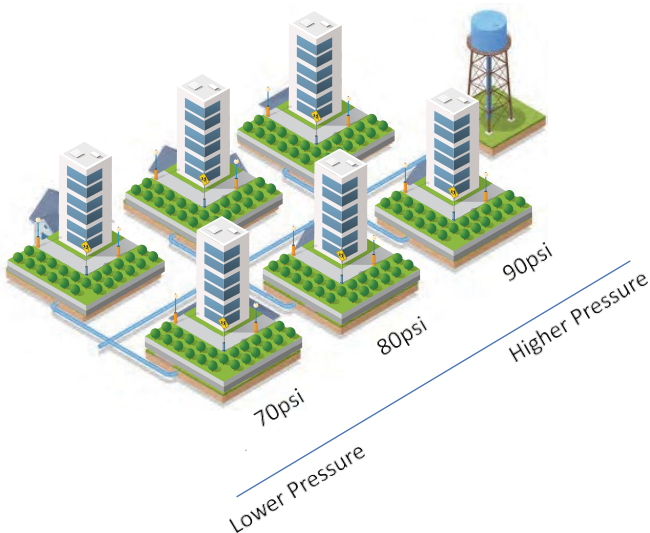


THE SOLUTION

The technology allows all commercial, industrial, government, and residential properties, with municipal water servicing, to tailor their water service to their property's actual needs, reducing their monthly water consumption and water/wastewater expense by 20% or more.

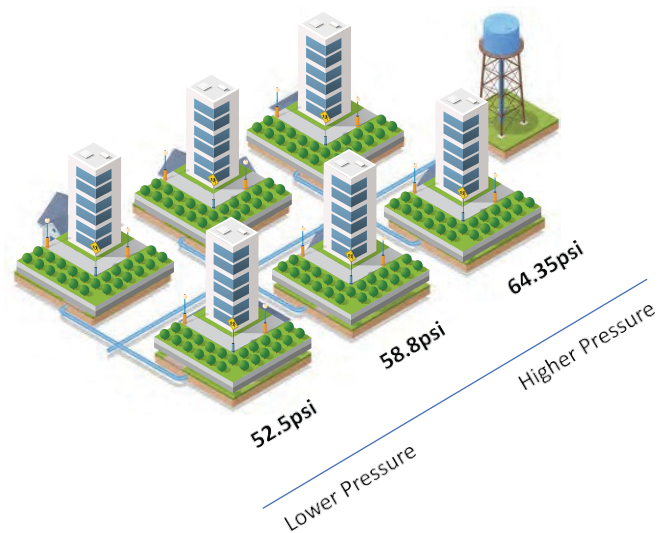
WITHOUT

Water Optimization



WITH

Water Optimization



The Physics of Controlling Water Flow:

We create a calibrated back pressure within the property's water system to slow down all flow rates by an exact pre-defined percent.

Our Manufacturer uses a butterfly valve design with Torsion Springs. Both Torsion Springs and water flow rates operate on linear scales, where for every 1 psi increase/decrease in a water system, we get a similar increase/decrease in flowrate. Just the same, for every 1 degree of movement experienced by a Torsion Spring, the spring exerts the same exact force back on the gate surface. By applying this linear force to the gates of our butterfly valve, we impart an adaptive force on the water flow that will impart an equal flow reduction across all flow rates, measured as a percent.

WATER OPTIMIZATION



The First Automated & Adaptive Flow Management System

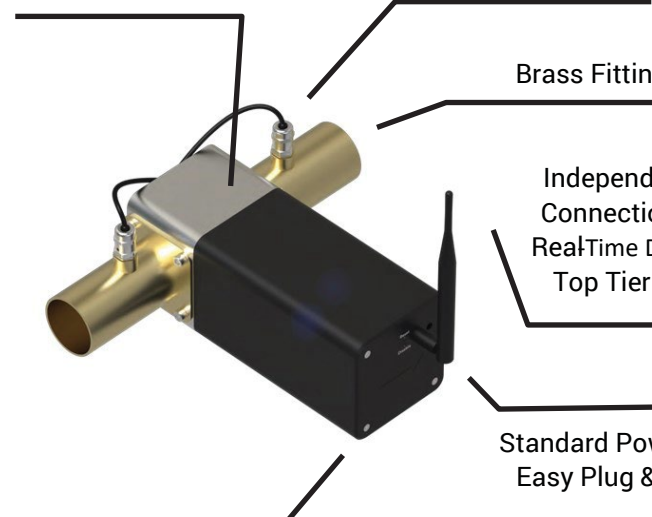
Reduce Your Water Consumption by 12% to 20%



THE HARDWARE



Machined from Stainless Steel



Brass Fittings for ProPress

Independent SIM & Cellular Connection Ensures Reliable RealTime Data Transfer, With Top Tier Network Security

Standard Power Connection for Easy Plug & Play Onboarding

Weather Resistant Encasement Protects the Electronics in All Environments



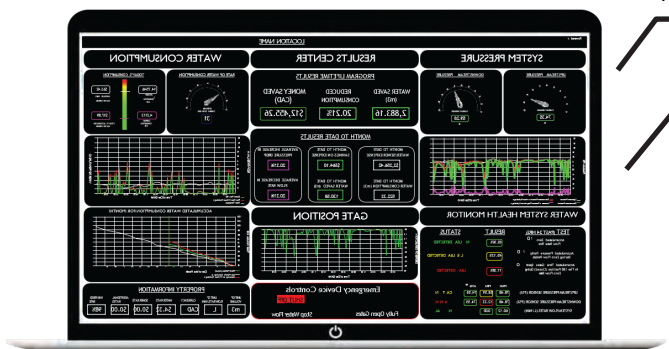
THE DASHBOARD

Property Specific Dashboard

Real - Time & Historical Reporting

Time Data & Analytics

Optional Water Quality Auditing



Device Control to Engage and Disengage System, with Emergency Water Line Shutoff

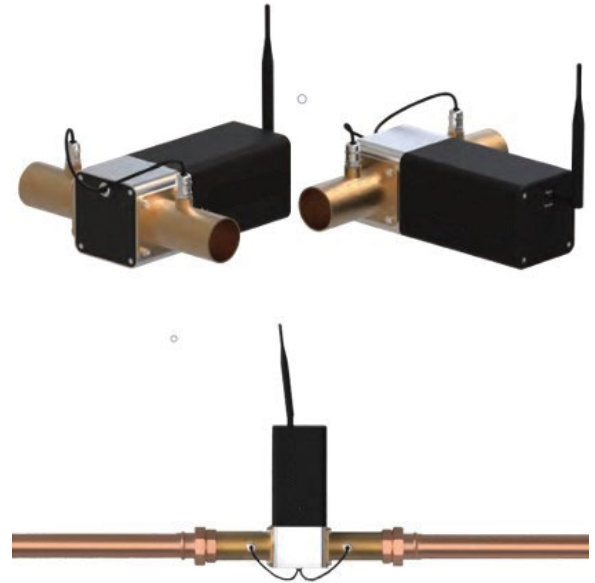
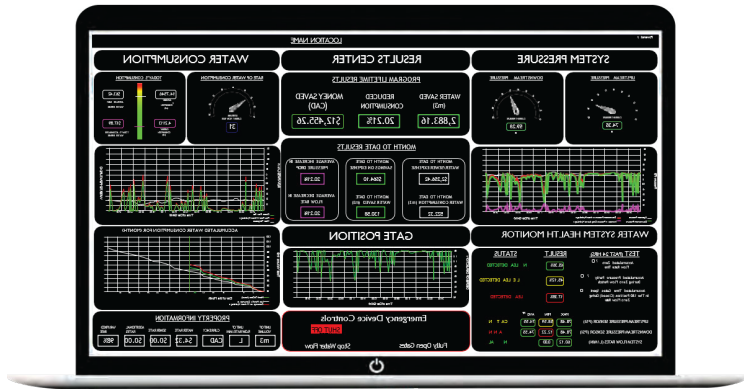
Track External Data Points Which Influence Consumption Behaviors



Tracks Real-Time Consumption to Identify Leaks, While Providing an Emergency Waterline Shut-off On Your Dashboard & Mobile



FLOW MANAGEMENT SYSTEM



PRODUCT OVERVIEW:

The Water Optimizer Product Series is the first advanced Flow Management System designed to reduce your property's water consumption, without disrupting your property's operations.

Leveraging our manufacturer's proprietary technology, you now have the ability to optimize your property's water consumption to your actual needs, reducing over consumption while saving you money.

The onboard computer powers a customized dashboard, offering you comprehensive insights into your water system and how you utilize it, while providing the user with built-in safety systems that monitor high- and low-pressure occurrences, and making micro adjustments to the Water Optimization system, accordingly.

- ✔ Displays internal gate position Increase or decrease in savings

OPTIONAL:

- ✔ Track water quality

KEY BENEFITS:

- ✔ Significantly reduces water consumption
- ✔ Track your total water consumption
- ✔ Audit your water expense
- ✔ Emergency water shutoff
- ✔ Identify irregular flow rates
- ✔ Advanced leak detection
- ✔ Data management on secured cloud network
- ✔ Independent secured cellular data connection
- ✔ Trouble free installation by professionals

KEY FEATURES:

- ✔ Measures and tracks
- ✔ Water flow rate & velocity
- ✔ Consumed water volume
- ✔ Water pressure
- ✔ Water temperature
- ✔ Imparted % reduction
- ✔ Savings in volume and dollars
- ✔ % of water line capacity used
- ✔ Daily, weekly, monthly, & annual reporting

REDUCE YOUR WATER EXPENSE BY 12% TO 20%+

Thank You



CONTACT US

MICHAEL O'MARA

Business Strategy

m.omara@alvarezplumbing.com

919.215.8100



SANTIAGO RODRIGUEZ

Business Development

s.rodriguez@alvarezplumbing.com

813.399.1975

